

UK Cubicles

[www.ukcubicles.co.uk](http://www.ukcubicles.co.uk)

call: 01535 602141

email: [sales@ukcubicles.co.uk](mailto:sales@ukcubicles.co.uk)



Unit 5A, Airedale Business Park, Royd Ings Avenue, Keighley, BD21 4DG

Tel: (01535) 602141

Fax: (01535) 630827

Web: [www.ukcubicles.co.uk](http://www.ukcubicles.co.uk)

Email: [sales@ukcubicles.co.uk](mailto:sales@ukcubicles.co.uk)

## Contractor Range Toilet Cubicles

Our Contractor Toilet Cubicle Range is available on next day delivery, if ordered before 12pm. The range is off the shelf and ideal for temporary or light usage environments.

### Advantages of the Contractor System

- Economical and great value
- Ideal for jobs with a very tight deadline
- Stable and strong
- Ideal for temporary or light usage requirement
- Delivered complete with all necessary fittings
- Flat Pack Solution
- Cost effective
- Mix panel colours to provide contrast
- Fully water and rust proof SAA fittings

### Highly Recommended for

- Construction Sites
- Light usage toilet cubicle areas
- Temporary cubicles
- Taste booths
- Office toilets
- Reading booths
- Clothing store changing rooms
- Any dry area requiring a quick cubicle solution

### Specification

Guarantee	10 years on cubicle fittings
Panels	18mm Melamine Faced Chipboard (MFC)
Price Range	Low
Availability	Order before 12pm for next day delivery
Fittings	Heavy Duty Satin Anodised Aluminium
Uses	Dry Area Toilet Cubicles
Environment	Dry
Partition Depth	1500mm (Standard)
Cubicle Height	1950mm (Standard)

### Colour Combination Suggestions



Door: Light Grey  
Pils & Parts: White



Door: Sand  
Pils & Parts: Light Grey



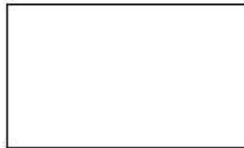
Door: Lavender  
Pils & Parts: Light Grey



Door: White  
Pils & Parts: Blue

### Contractor Range Colours

#### Doors and Partitions



White



Pastel Grey



Sand

#### Doors only

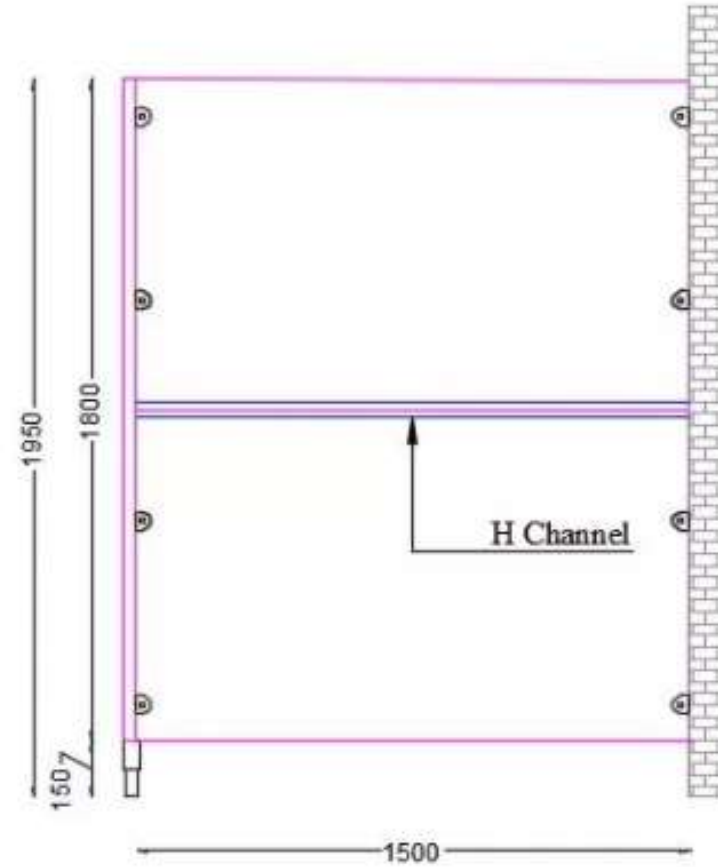
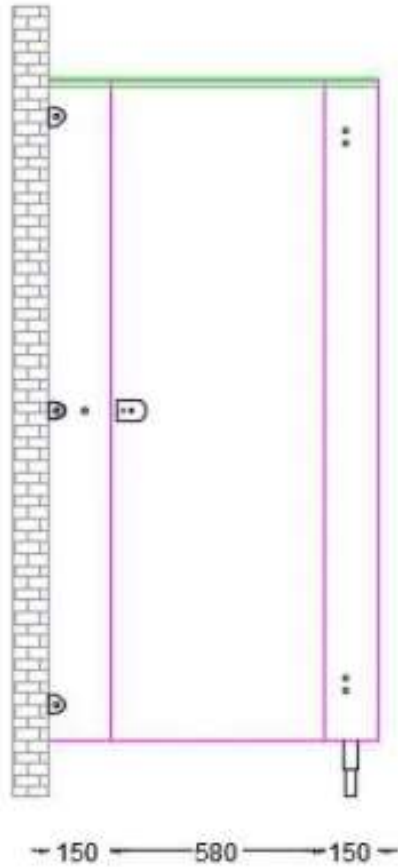


Blue



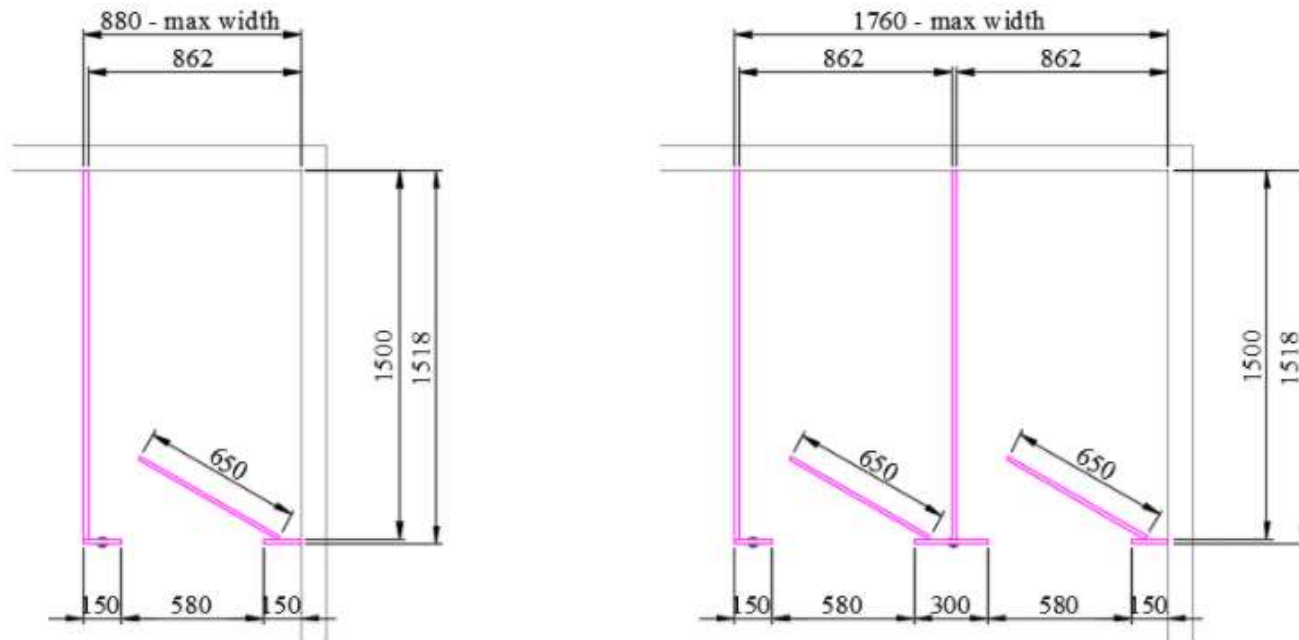
Lavender

### Panel Dimensions



Partition wall delivered as two separate 900 x 1500mm sections

### Example of Space Each Cubicle Provides



### Typical L Shaped Cubicle Pack consists of:

- 1no. 650mm x 1800mm solid one piece door panel
- 2no. 150mm x 1800mm Pilasters (300mm pilasters are available if required)
- 2no. 900mm x 1500mm sectional wall panels
- 1no. 1500mm long H channel cubicle wall jointing strip (used to create a 1800mm H x 1500mm L wall)
- 2no. 1800mm loose edging strips to cover any site cut edges

### Fitments:

- 1no. Slide Bolt
- 1no. Foot
- 8no. Wall / panel brackets for the partition walls
- 3no. or 6no. Wall / panel brackets for the pilasters. (Total depends on layout)
- 2no. Non Finger trap Hinges
- Length of headrail to suit
- All fittings guaranteed for 10 years

## Cubicle Fittings

Heavy Duty Satin Anodised Aluminium



## Typical Fittings Layout

